



C&I SOLUTIONS:

- PV Module(s)
- AC-Battery
- EMS
- Services

August 2025

WWW.JASOLAR.COM

JA SOLAR

Harvest the Sunshine

JA SOLAR PV & ESS SOLUTION





Harvest the sunshine

CONTENTS

- 01 | INTRODUCTION
- 02 | BESS PORTFOLIO
- 03 | WHY TO CHOSE JA SOLAR?

An aerial photograph showing several rectangular solar panels laid out on a lush green forest floor. The panels are arranged in a staggered pattern, and the surrounding trees are dense and vibrant green.

PART

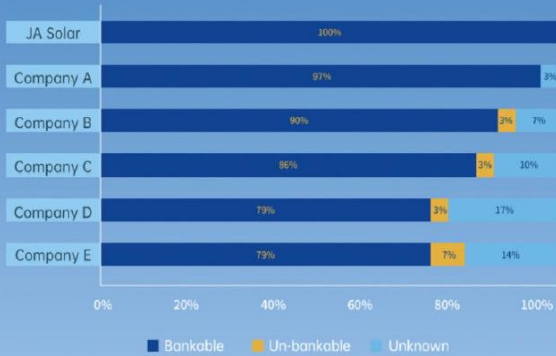
01

INTRODUCTION



WORLDWIDE BANKABILITY

Top Bankable Module Brands by BNEF Survey

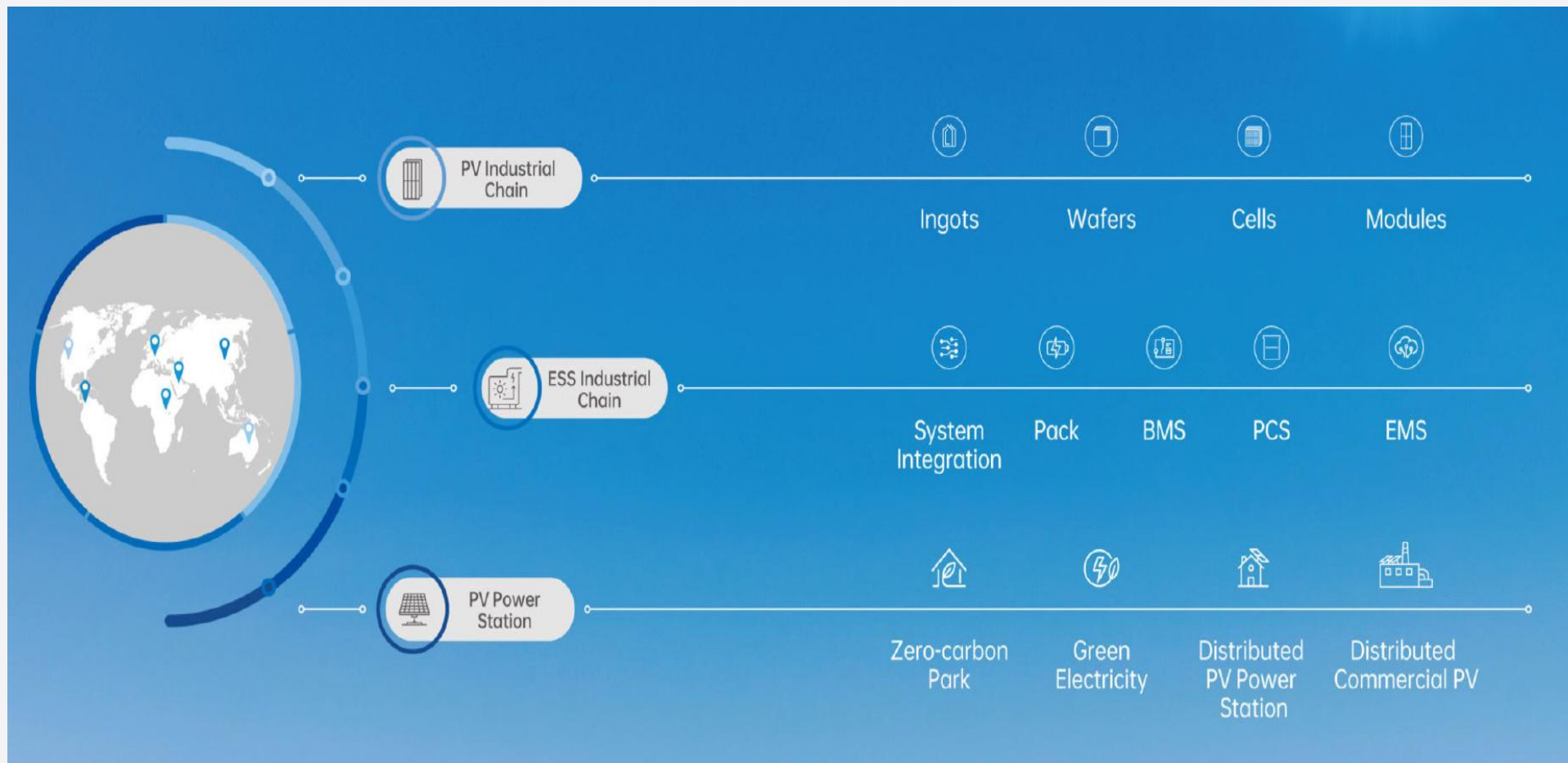


INTERNATIONAL ACCREDITATIONS

TOP PV BRAND

Award "Top PV Brand" by EUPD in multiple countries and regions for consecutive years.







Where is the raw material
from?



Traceability

Under what conditions
was it produced?



ESG Audits



PV MODULES

AC BATTERY



> BEST PRACTICES

JA Solar is actively involved in the **SSI**, a **solar-specific** sustainability program led by **Solar Energy UK** and **SolarPower Europe**.

The SSI focuses on fostering a more **responsible, transparent, and sustainable** solar value chain.

JA Solar holds a seat in the **SSI board**.



The Solar Stewardship Initiative (SSI) works collaboratively with manufacturers, developers, installers and purchasers across the global solar value chain to foster responsible production, sourcing and stewardship of materials.



Performance evaluated through:

- Governance and Business Ethics
- Environment
- Human and Labour Rights.

2 CERTIFICATED SITES



- Participation in the traceability pilot.
- Continuous working with our main polysilicon suppliers to be aligned with the standard.
- Ensures compliance with EU Forced Labour Product Ban



CS3D

Requirements to identify, prevent, and mitigate human rights and environmental risks across the supply chain

EU Battery Regulation

Requirements to enhance sustainability, safety, and circularity of batteries across the European Union

ROHS & REACH

Restrictions of use of hazardous substances in electrical and electronic equipment (ROHS)

Rules on the registration, evaluation, authorization and restrictions of chemical substances (REACH)

EU Conflict Minerals Regulation (Regulation (EU) 2017/821)

Requires companies to import tin, tantalum and tungsten, and gold (3TG) from responsible and conflict-free sources only

OECD Guidance for Responsible Supply Chains from Conflict-Affected and High-Risk Areas

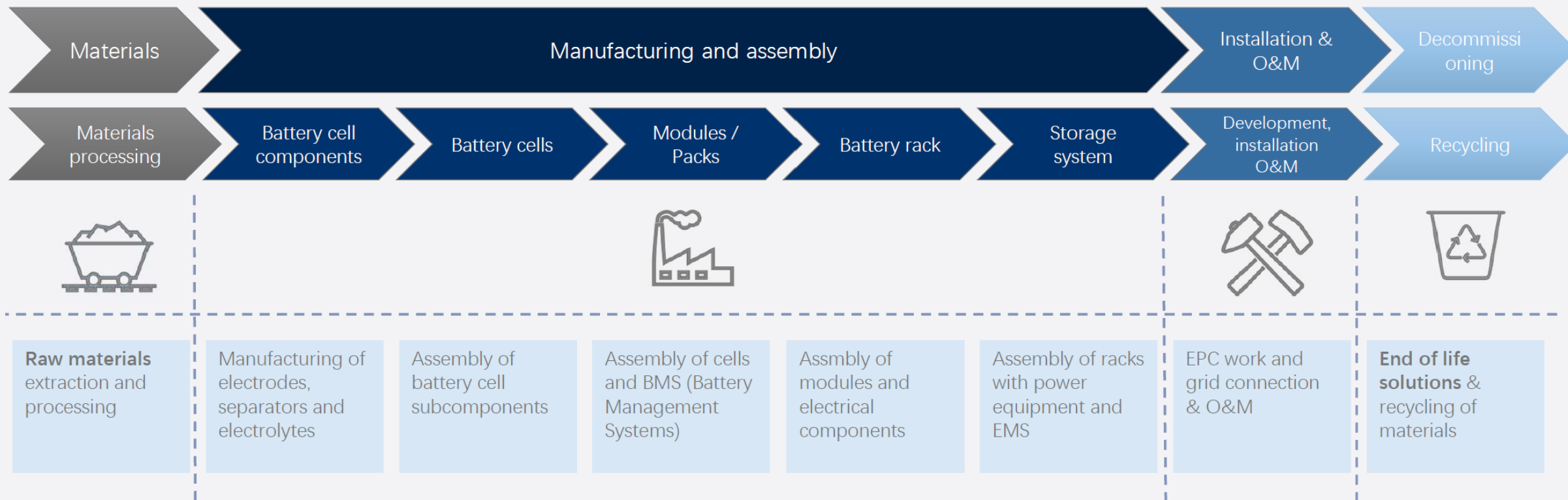
Five-step framework to help companies identify, prevent, and address risks of contributing to conflict or human rights abuses when sourcing minerals from high-risk area

UN Guiding Principles on Business and Human Rights

Set of guidelines developed to help businesses respect and uphold human rights in their operations and supply chains



Some of the Conflict-affected and high-risk areas (CAHRAs) under the Conflict Minerals Regulation





PART
02

**BESS
PORTFOLIO**



BlueGalaxy

JA UTILITY ENERGY STORAGE SYSTEM

BlueGalaxy 5365 / 4659



AIR-COOLED ESS 5.3MWh, 0.25C LIQUID-COOLED ESS 4.6MWh, 0.5C

Utility-scale ESS

FTM and Large-scale C&I

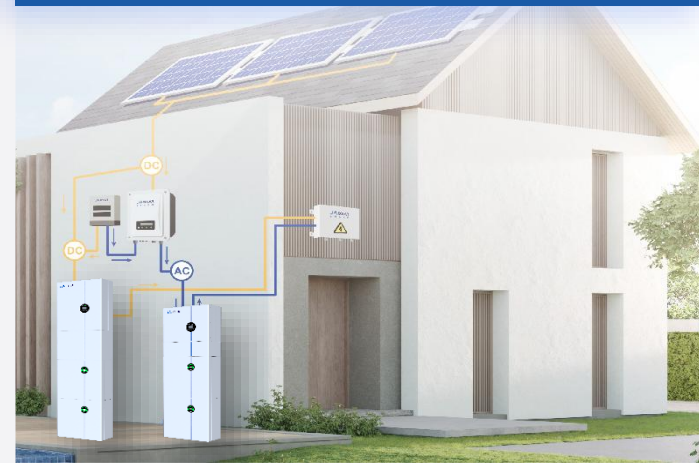
BluePlanet



C&I ESS

Small / Medium Scale C&I,
Distributed PV + ESS

BlueStar



Residential ESS

Rooftop PV + ESS

BluePlanet BP-ES-125kW-261kWh	
Battery Capacity (kWh)	261
Nominal Power (kW)	125
DC Nominal Voltage (V)	832
AC Nominal Voltage (V)	400
Dimensions (WxDxH)(mm)	989 × 1465 × 2471.5 mm
Weight (kg)	2800



<https://www.jasolar.eu/ci>



CAPACITY

261 kWh LFP (Lithium iron phosphate, LiFePO₄)

POWER OUTPUT

125kW @ 400V / 50Hz

SCALLABILITY

Up to 20 units can be connected for flexible designs

MONITORING

Highest comfort and reliability with 24/7 AI based remote control

EFFICIENCY

PCS >99% and battery has >88%

SECURITY

Battery: Intelligent three-level fire protection warning mechanism

ECONOMIC

Intelligent liquid cooling to manage the cell temperature difference <1.5°C

GRID FUNCTIONS

Supports Frequency Response and stabilization of grid connection point

BTM FUNCTIONS

Time Of Use, Peak Shaving, Demand Side Management

INSTALLATION

Pre-Installation and pre-commissioning for fast implementation

WARRANTY

Product warranty 5 years. Extension to max 10 years is possible



261kWh

Total capacity, 235kWh usable capacity, LFP Battery

125kW

AC Power @ 400V / 50Hz

20units

can be connected for flexible designs

24/7

Highest comfort and reliability with AI based remote control

99% & >89%

Efficiency for PCS & Battery (RTE)

3-Level

Battery: Intelligent three-level fire protection warning mechanism

1.5°C

Intelligent liquid cooling to manage the cell temperature difference <1.5°C

100ms

Fast switching time discharge & charging

BTM

Functions, i.e. Time Of Use, Peak Shaving, Demand Side Management

1

Energy Management System for (almost) all applications

5 years

Battery (PCS 10 years?)



Battery Packs

BMS – Battery Management System

PCS – Power Conditioner System

EMS – Energy Management System

BMS

PCS

Battery Cooling System

SAFE AND RELIABLE

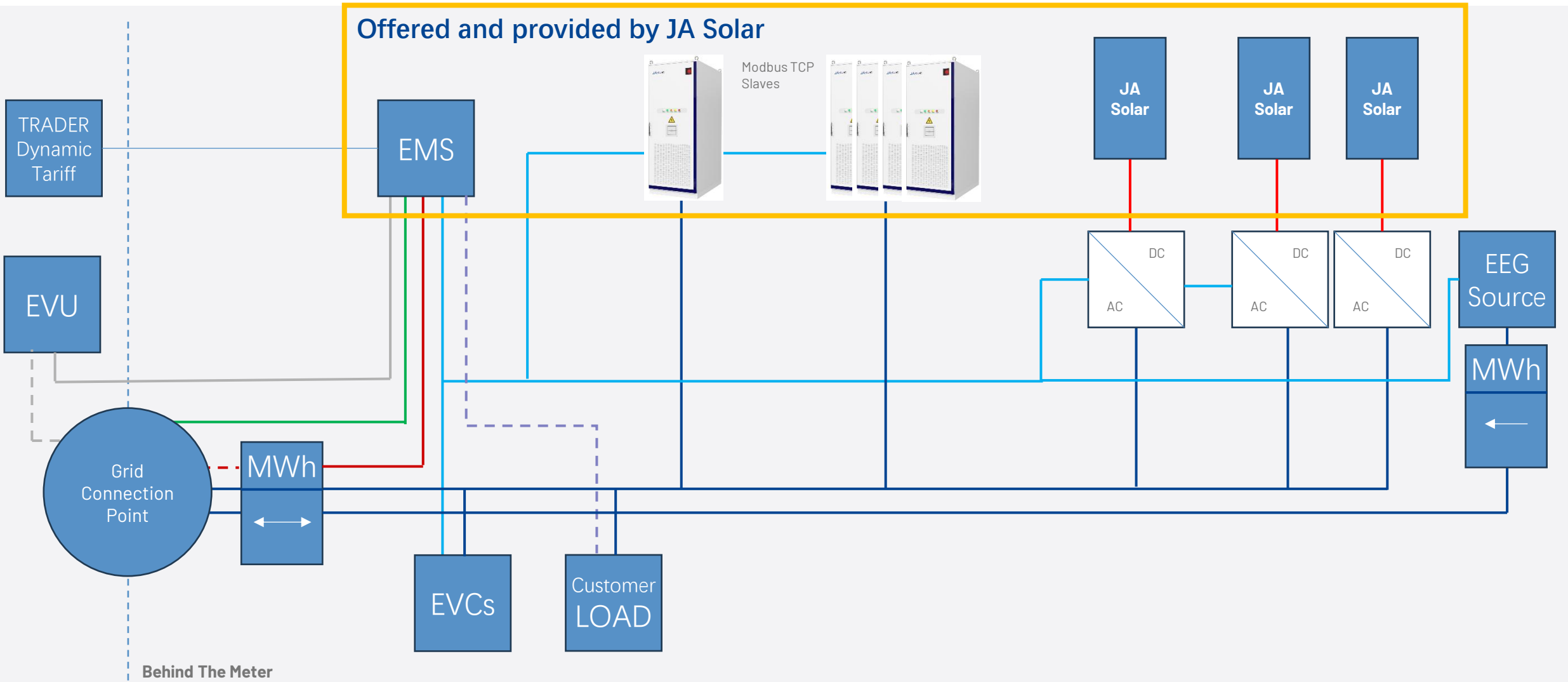
- Intelligent **three-level fire protection warning mechanism** with system explosion-proof design and pack-level detection & fire extinguishing
- **Cabinet withstands 1600°C** due to the explosion-proof & fire-resistant insulation with long-fiber alumina composite
- **Real-time AI monitoring** with early warning to prevent thermal runaway
- **Millisecond-level linkage response**

ECONOMIC AND EFFICIENT

- **Long-life LFP batteries** can provide higher returns on investment
- **Intelligent liquid cooling** to manage the **cell temperature difference within $\pm 1.5^{\circ}\text{C}$**
- Low auxiliary energy consumption, 30% less than air-cooled product.
- **Maximum 20 grid-connected** units in parallel to **provide 5MWh+ solution.**

SMART AND CONVINIENT

- **High precision SOX algorithm**, full-time passive balancing and status monitoring.
- **Pre-installation and pre-commissioning** in factory for easier site work.
- **Full traceability of components** during the manufacturing process **simplifies O&M, and after-sales services.**
- Pre-built multi-scene control strategies.





PART
03

WHY TO CHOOSE JA SOLAR?

JA SOLAR CUSTOMER PROMISE

ADVANCED MONITORING:	Review performances for JA Solar PV modules (based on string data) and AC-battery
CONSULTING:	Pre-Sales support & review project performance for possible further optimization
RELIABILITY:	Project solution fulfils customers (installer and end-customers) expectation
SIMPLIFICATION:	Of project complexity with (own) Energy Management System



CUSTOMER NEEDS & REQUEST	JA SOLAR OFFER & SOLUTION
Ensure energy purchasing cost savings	PV and BESS project approach is designed to customer needs
Understand energy consumption & -costs and potential savings	Advanced AI monitoring and cost analysis
Flexibility to ensure technology and market trends	Solution is expandable and can adapt external communication protocols for EMS
All-In-One Solution One Warranty One Contact Partner	Ensure high team- & product performances for best highest customer satisfaction



**One Contact
for PV & BESS!**



**Simple All-In-One
Design!**



**Cost Savings
Through Faster
Installation!**



**Superior Safety
With REPT
Batteries!**

Harvest the Sunshine

Premium Cells, Premium Modules